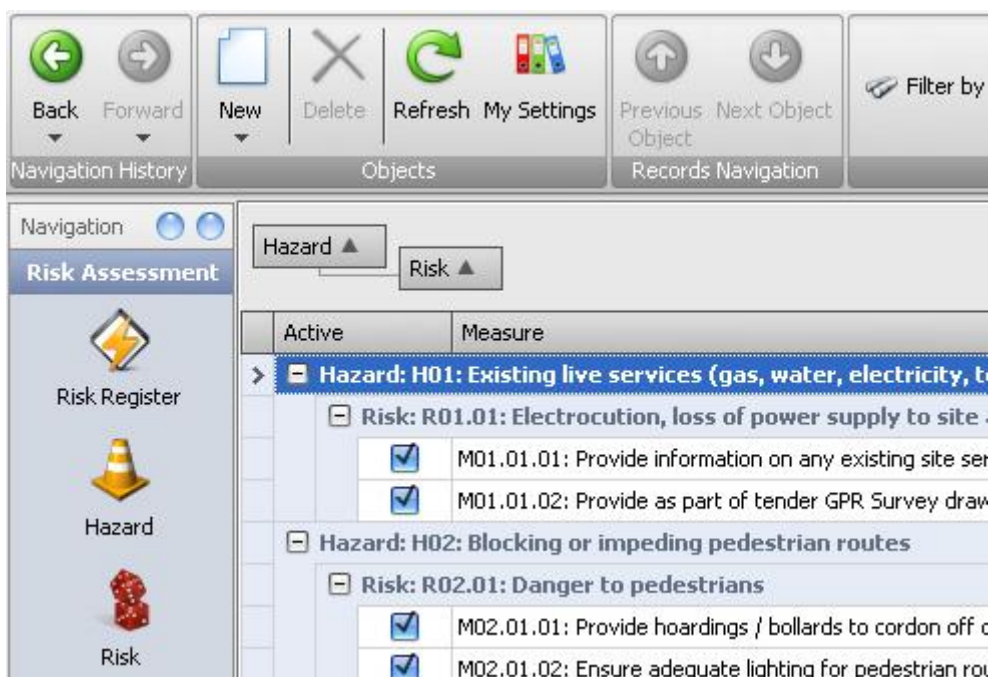


IT Systems

STW maintain a constant awareness of advances in Computer Technology and continuously invest in software, hardware and expertise to ensure that all projects have access to the best technology available. The IT Department provides technical support and continual training to staff on all aspects of software utilised on our solid and secure Network.

Project Quality Plan (PQP)

The STW Intranet provides access for all staff to in-house resources through a web based user interface. The Project Quality Plan or PQP system is a core component of the Intranet which provides a centralised SQL database repository of key project information at each stage of a project. The PQP system identifies who, why, when, where and how the practice will perform the specified requirements of the client for that particular project. The PQP continues to be expanded and improved upon by in-house software engineers and is audited by NSAI as part of the ISO 9001 and ISO 14001 accreditation.



Integrated Project delivery (IPD)

We have extensive experience in the use of project collaboration systems on a number of current large projects including the Mater Hospital Redevelopment and the new Aviva Stadium, formally Lansdowne Road Stadium. By taking a leading role in the preparation and implementation of project collaboration systems, we have the experience to quickly define a robust set of project documentation in conjunction with key project stakeholders in order to ensure the success of an Integrated Project Delivery approach.

Effective collaboration among the key project stakeholders provides opportunities to reduce costs and manage the complexity required from modern highly serviced buildings. STW has proven experience working with clients, consultants and contractors using project collaborative systems such as Asite, Buzzsaw and BIW on major private and public projects. STW have taken a lead role in developing and implementing project-wide protocols for Aviva Stadium, formerly Lansdowne Road stadium, which has provided a consistent approach for the entire project team to sharing design and construction information.

Information Systems

To remain current with changes in legislation, environmental awareness and good practice within the construction industry, STW use NBS Building for creation of up-to-date specifications and subscribe to Irish and UK Construction Information Services and to the Occupational Health & Safety Information Service. These services are augmented by training from key staff with interests in areas of legislation and technology and CPD seminars from specialist external organisations.

Financial Budgeting and Forecasting

Up to date work in progress and budget performance forecasting is critical to providing project directors with information to make informed financial decisions. Strategic Planning integrated with Time and Expenses software by Atlantic Global Solutions is utilised to collect and analyse project and activity timesheet data via the STW intranet.

Business Continuity

STW has been in practice since 1928 and business continuity extends into every function of STW including the IT systems. All data is mirrored to a different physical location "Failover Server" to minimise the risk of data loss or business disruption in the case of a major physical disaster. All data is recorded and maintained in a documented and structured manner in secure locations.

Building Information Modelling (BIM)

We are committed to improving the design and construction processes and have invested in Building Information Modelling, Revit being our preferred platform, as a strategic tool to collaboratively harness the talents and insights of all participants to optimise project results, increase value to the owner, reduce waste, and maximise efficiency through all phases of design, fabrication, and construction. Building Information Management allows us not only to model the building, providing for closer integration and co-ordination across the Project Team, but also to carry out sustainability studies, real time clash detection, shadow analysis, thermal modelling and 3D walk-throughs.

